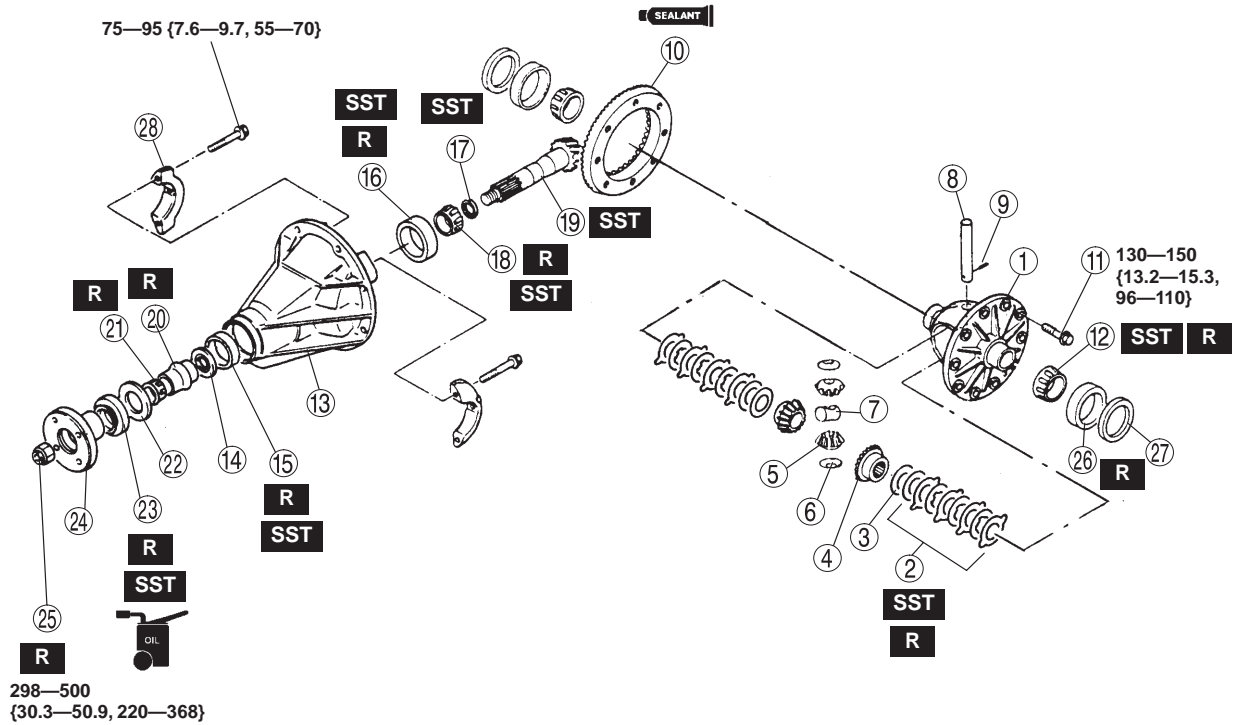


LIMITED SLIP DIFFERENTIAL ASSEMBLY

- Assemble in the order indicated in the table.



N·m {kgf·m, ft·lbf}

1	Case
2	Limited slip differential component + Assembly Note
3	Side gear thrust washer
4	Side gear
5	Pinion gear
6	Pinion gear thrust washer
7	Thrust block
8	Pinion shaft
9	Roll pin + REAR DIFFERENTIAL, STANDARD DIFFERENTIAL ASSEMBLY, Roll Pin Assembly Note
10	Ring gear + REAR DIFFERENTIAL, STANDARD DIFFERENTIAL ASSEMBLY, Ring Gear Assembly Note
11	Hex screw
12	Side bearing cone + REAR DIFFERENTIAL, STANDARD DIFFERENTIAL ASSEMBLY, Side Bearing Cone Assembly Note
13	Carrier

14	Oil buffle
15	Front bearing cup + REAR DIFFERENTIAL, STANDARD DIFFERENTIAL ASSEMBLY, Front Bearing Cup Assembly Note
16	Rear bearing cup + REAR DIFFERENTIAL, STANDARD DIFFERENTIAL ASSEMBLY, Rear Bearing Cup Assembly Note
17	Adjusting shim + REAR DIFFERENTIAL, STANDARD DIFFERENTIAL ASSEMBLY, Adjusting Shim Assembly Note
18	Rear bearing cone + REAR DIFFERENTIAL, STANDARD DIFFERENTIAL ASSEMBLY, Rear Bearing Cone Assembly Note
19	Drive pinion + REAR DIFFERENTIAL, STANDARD DIFFERENTIAL ASSEMBLY, Drive Pinion Assembly Note
20	Collapsible spacer

REAR DIFFERENTIAL

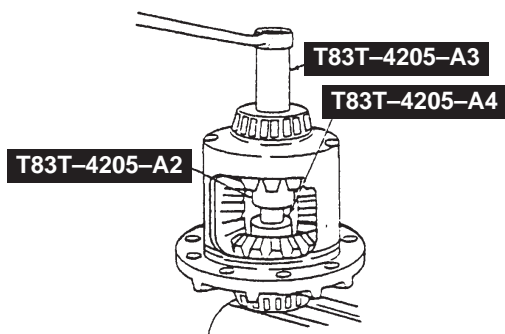
21	Front bearing cone
22	Thrust washer
23	Oil seal + REAR DIFFERENTIAL, STANDARD DIFFERENTIAL ASSEMBLY, Oil Seal Assembly Note
24	Companion frange
25	Pinion nut
26	Side bearing cup + REAR DIFFERENTIAL, STANDARD DIFFERENTIAL ASSEMBLY, Side Bearing Cup Assembly Note
27	Adjusting shim + REAR DIFFERENTIAL, STANDARD DIFFERENTIAL ASSEMBLY, Adjusting Shim Assembly Note
28	Bearing cap + REAR DIFFERENTIAL, STANDARD DIFFERENTIAL ASSEMBLY, Bearing Cap Assembly Note

Limited Slip Differential Component Assembly Note

Note

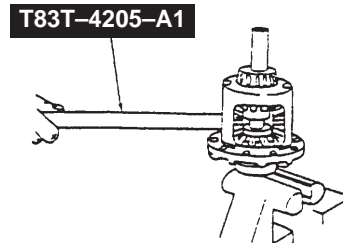
- Always replace the entire disc and plate kits, even if only one component requires it.

- Assemble the retainer clips to the ears of the clutch plates. Make sure both clips are completely assembled or seated onto the ears of the clutch plates.
- Place the differential case on a bench. Assemble the clutch pack and side gear into the differential case. Make sure the clutch pack stays assembled to the splines of side gear, and the retainer clips are completely seated into the pockets of differential case.
- Install the **SSTs** to the differential case.

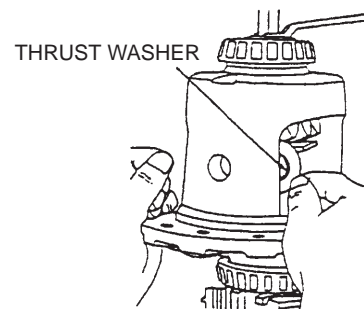


- With tools assembled to the differential case, position the differential case onto the axle shaft by aligning the splines of the differential side gear with those of the axle shaft.
- Position both pinion gears opposite one another through the openings in the differential case. Align holes of the differential pinion gears with each other. Hold the pinion gears by hand.

- Tighten the **SST** so the side gears move away from the pinion gears and relieve the loaded condition.
- While holding the pinion gears in place, insert **SST** into the hole of pinion shaft in the differential case. Pull on the **SST** rotating differential case allowing the differential pinion gears to rotate and enter into the differential case.



- Adjust the **SST** by very slightly loosening or tightening until the required load is applied to allow the side gears and pinion gears to rotate.
- Rotate the differential case until the holes of both pinion gears are aligned with those of the differential case.
- Apply torque to the **SST** for clearance to assemble the differential thrust washers.



Note

- During assembly, be sure the holes of the thrust washers and gears are lined up exactly with those of the differential case.

- Assemble thrust washers into the differential case. Use a very small screwdriver or shim stock to push the washers into place.

