

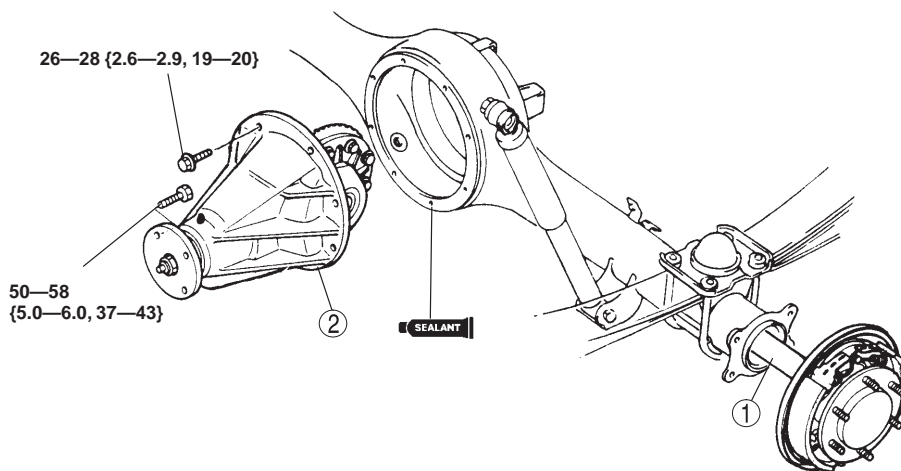
REAR DIFFERENTIAL

REAR DIFFERENTIAL REMOVAL/INSTALLATION

Caution

- Clean away the old sealant before applying the new sealant.
- Install the differential carrier within 10 minutes after applying sealant.
- Allow the sealant to set at least 30 minutes after installation before filling the differential with the specified oil.

1. Drain the differential oil. (Refer to REAR DIFFERENTIAL, REAR DIFFERENTIAL OIL REPLACEMENT.)
2. Remove the rear propeller shaft. (Refer to section L, REAR PROPELLER SHAFT (4 × 4), REAR PROPELLER SHAFT REMOVAL/INSTALLATION.)
3. Remove in the order indicated in the table.
4. Install in the reverse order of removal.



N·m {kgf·m, ft·lbf}

1	Axle shaft and back plate component + REAR AXLE, AXLE SHAFT REMOVAL/ INSTALLATION
---	---

2	Differential + Removal Note
---	--------------------------------

Differential Removal Note

- To prevent the differential from dropping, leave the two bolts loosely tightened. Then hit the differential carrier using a wooden hammer.

