

REAR AXLE

REAR AXLE

REAR AXLE INSPECTION

Wheel Bearing Play Inspection

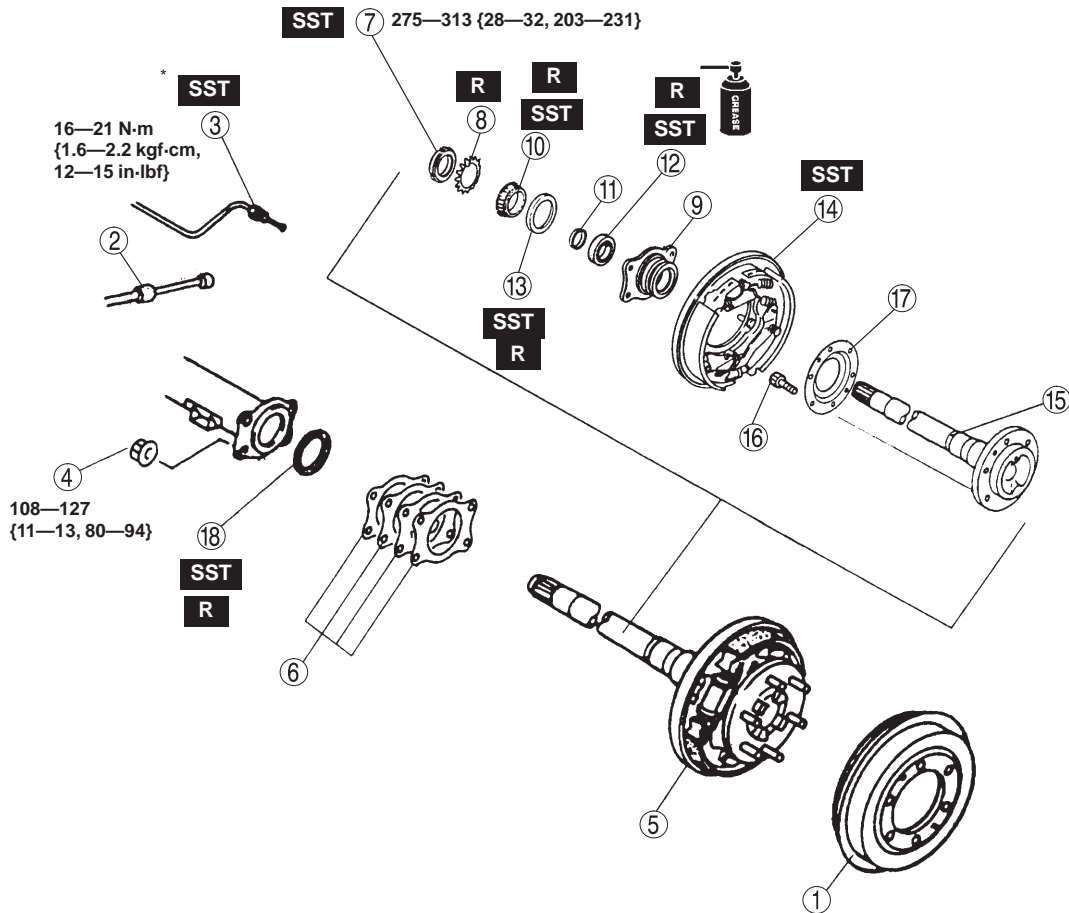
1. Jack up the rear end and support it with safety stands.
2. Verify that there is no abnormal noise and that the tire rotates smoothly when forcefully rotated by hand.
3. With a hand on top of the tire, inspect the bearing play.

Wheel bearing axial play
0.05—0.25 mm {0.002—0.010 in}

AXLE SHAFT REMOVAL/INSTALLATION

1. Remove in the order indicated in the table.
2. Install in the reverse order of removal.

4. If not as specified, adjust the bearing play. (Refer to REAR AXLE, AXLE SHAFT REMOVAL/INSTALLATION, Bearing Inner Race, Bearing Locknut Installation Note, Bearing play adjustment.)



*49 0259 770B

N·m {kgf·m, ft·lbf}

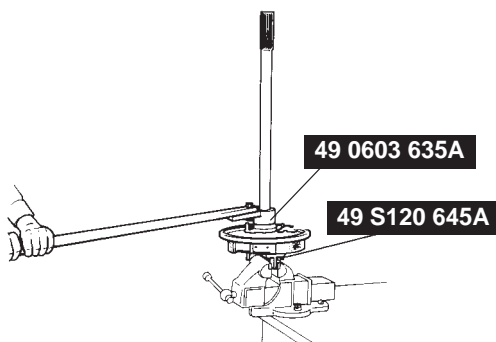
REAR AXLE

1	Brake drum
2	Parking brake connecting pin
3	Brake pipe
4	Nut
5	Axle shaft and back plate component
6	Shim
7	Bearing locknut + Removal Note + Installation Note
8	Lock washer
9	Bearing housing + Removal Note
10	Bearing inner race + Installation Note
11	Bearing spacer
12	Oil seal (bearing housing side) + Installation Note
13	Bearing outer race + Removal Note + Installation Note
14	Back plate component
15	Axle shaft
16	Hub bolt
17	Baffle
18	Oil seal (axle casing side) + Removal Note + Installation Note

Bearing Locknut Removal Note

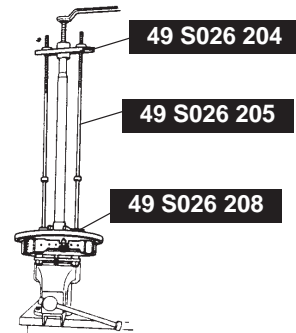
Note

- Be careful when removing or installing the bearing locknuts for the left wheels because they are left threaded (tightened by turning counterclockwise).
- Set the **SSTs** as shown in the figure, and remove the bearing locknut from the rear axle shaft.



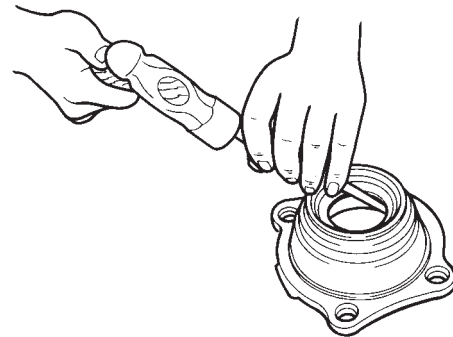
Bearing Housing Removal Note

- Remove the bearing and bearing housing using the **SSTs**.



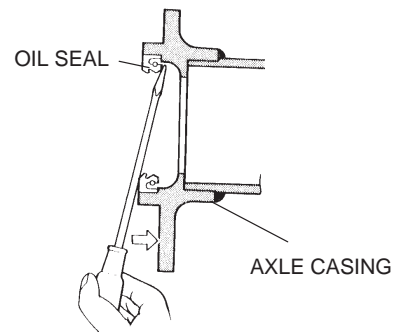
Bearing Outer Race Removal Note

- After removing the bearing inner race and oil seal from the rear wheel hub, tap lightly using a suitable round bar to force out the outer race.



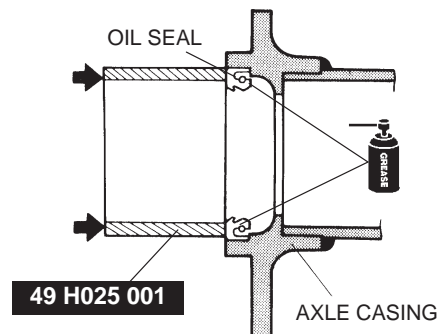
Oil Seal (Axle Casing Side) Removal Note

- Remove the oil seal from the axle casing using a screwdriver.



Oil Seal (Axle Casing Side) Installation Note

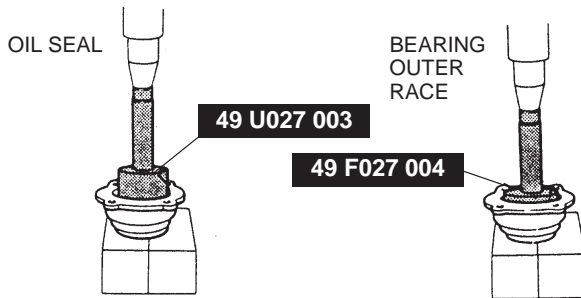
- Use the **SST** to tap the oil seal in until it is flush with the end of the axle casing.
- After installation, apply grease to the oil seal lip.



REAR AXLE

Bearing Outer Race, Oil Seal (Bearing Housing Side) Installation Note

- Press the bearing outer race and the oil seal using the **SSTs**.

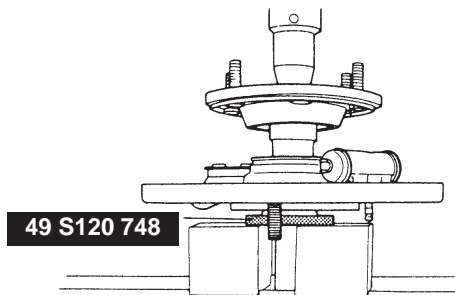


Bearing Inner Race, Bearing Locknut Installation Note

Caution

- The torque wrench must be attached perpendicular to the **SST**.

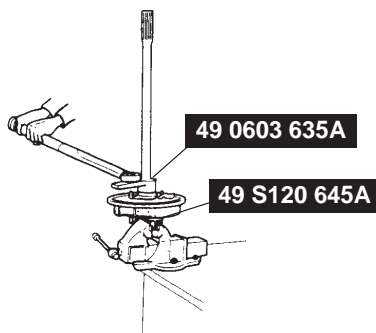
- Set the **SST** and then press the bearing inner race in until 3 to 5 threads of the bearing locknut mounting screw of the axle shaft are visible above the top of the bearing outer race.



- Remove the **SST**, and then install the bearing locknut to the axle shaft.
- Tighten the bearing locknut using the **SST** to press in the bearing inner race.
- Remove the **SST** and install the lock washer so that its tab fits into the groove of the axle shaft.
- Tighten the bearing locknut to the specified torque.

Bearing locknut tightening torque

275—313 N·m
{28.0—32.0 kgf·m, 203—231 ft·lbf}



Bearing play adjustment

- Adjust the bearing play in the axial direction (only when the bearing is replaced).
- First insert one side of the rear axle shaft component and push the end of the shaft to the thrust block, then insert a shim(s) at point A so that the clearance between the end of the shaft and the thrust block becomes **0.65—0.95 mm {0.026—0.037 in}**.
 - Next insert the opposite shaft component and push the end of the shaft to the thrust block.
 - Use a shim(s) at point A so that the clearance between the end of the shaft and the thrust block becomes **0.05—0.25 mm {0.002—0.010 in}**.

Bearing play in axial direction

0.05—0.25 mm {0.002—0.010 in}

