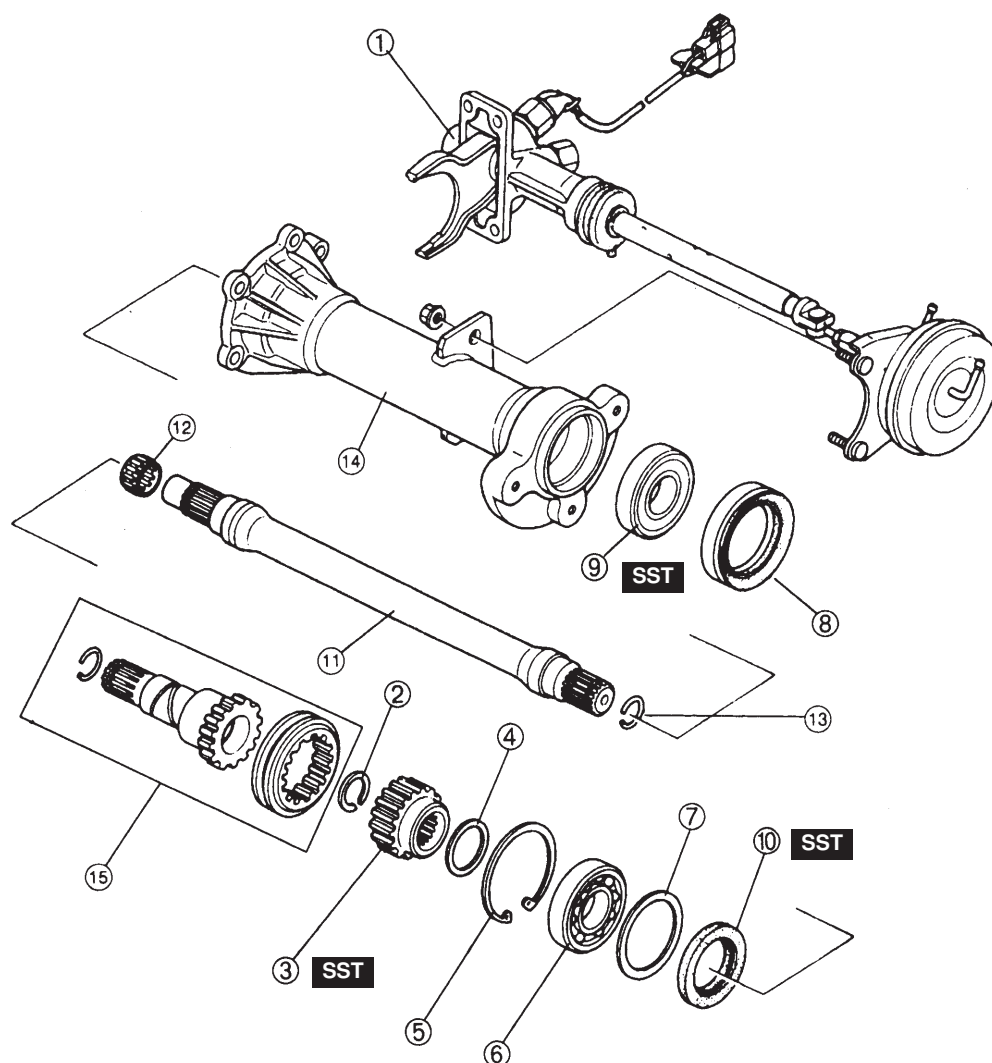


REMOTE FREEWHEEL (RFW) MECHANISM

JOINT SHAFT COMPONENT DISASSEMBLY

- Disassemble in the order indicated in the table.



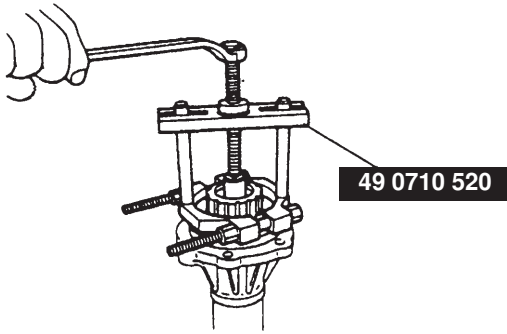
1	Control box
2	Clip
3	Remote freewheel hub + Disassembly Note
4	Spacer
5	Retaining ring
6	Ball bearing + Disassembly Note
7	Adjustment shim (s)
8	Dust seal

9	Bearing + Disassembly Note
10	Oil seal + Disassembly Note
11	Joint shaft
12	Needle bearing
13	Clip
14	Casing
15	Output shaft and gear sleeve

REMOTE FREEWHEEL (RFW) MECHANISM

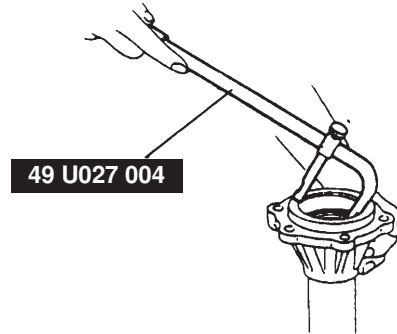
Remote Free Wheel Hub Disassembly Note

- Remove the remote free wheel hub using the SST.



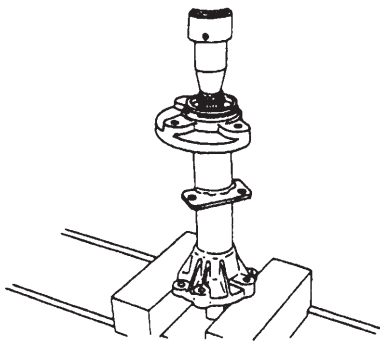
Oil Seal Disassembly Note

- Remove the oil seal using the SST.

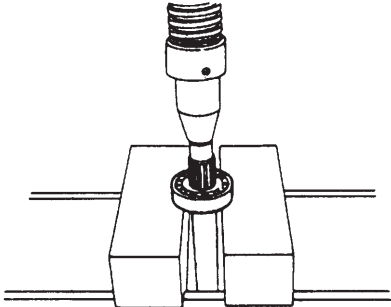


Ball Bearing Disassembly Note

1. Remove the ball bearing and the joint shaft using a press.



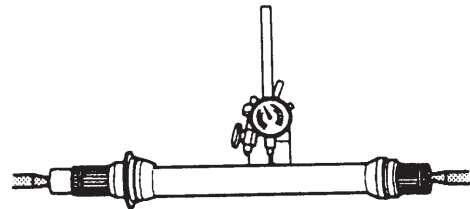
2. Remove the ball bearing using a press.



JOINT SHAFT INSPECTION

1. Measure the joint shaft runout.

Maximum runout
0.03 mm {0.0012 in}



2. If not correct, replace the joint shaft.

Bearing Disassembly Note

- Remove the dust seal and bearing using the SST and a suitable bar.

