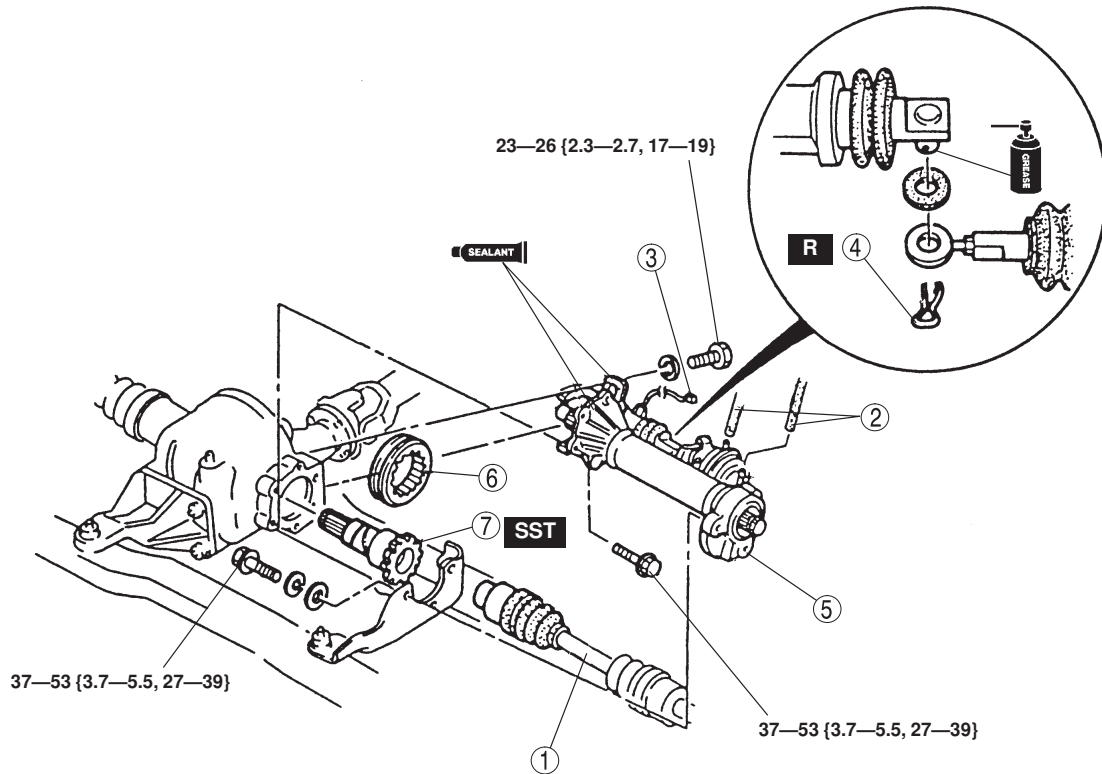


REMOTE FREEWHEEL (RFW) MECHANISM

JOINT SHAFT COMPONENT REMOVAL/INSTALLATION

1. Drain the front differential oil. (Refer to FRONT DIFFERENTIAL, DIFFERENTIAL OIL REPLACEMENT.)
2. Remove in the order indicated in the table.
3. Install in the reverse order of removal.



N·m {kgf·m, ft·lbf}

1	Drive shaft + DRIVE SHAFT, DRIVE SHAFT REMOVAL/ INSTALLATION
2	Vacuum hose
3	RFW switch connector

4	Snap pin
5	Joint shaft component, control box component
6	Gear sleeve
7	Output shaft + Removal Note

Output Shaft Removal Note

- Remove the output shaft using the SST.

