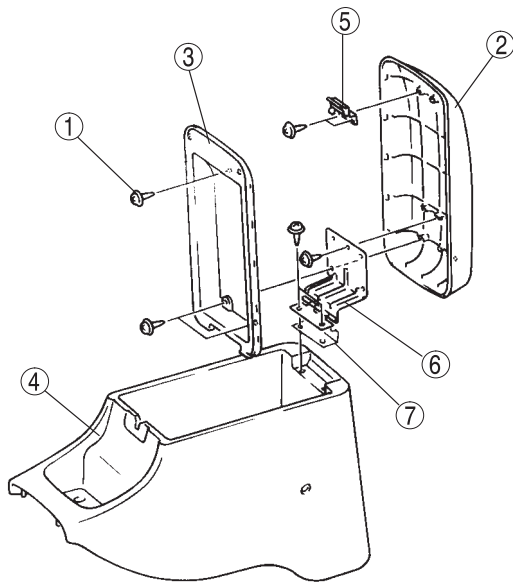


DASHBOARD AND CONSOLE

REAR CONSOLE DISASSEMBLY/ASSEMBLY

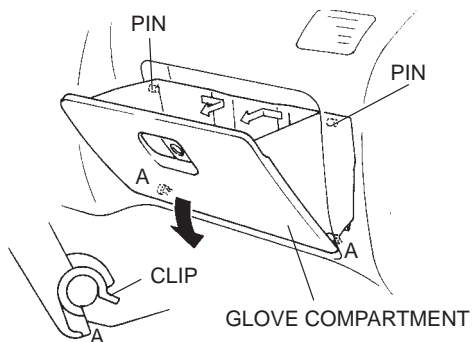
1. Disassemble in the order indicated in the table.
2. Assemble in the reverse order of disassembly.



1	Screw
2	Console lid outer
3	Console lid inner
4	Rear console
5	Console lid lock
6	Console lid hinge
7	Console lid bracket

GLOVE COMPARTMENT REMOVAL/INSTALLATION

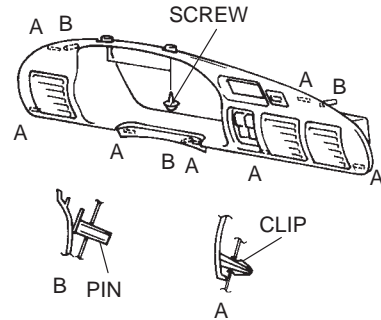
1. Open the glove compartment and bend the sides inward to disengage the pins.
2. Pull the glove compartment downward, then disengage clips A.



3. Install in the reverse order of removal.

METER HOOD REMOVAL/INSTALLATION

1. Remove the screws.
2. Pull the meter hood toward you, then disengage clips A and pins B.



3. Disconnect the connectors, then remove the meter hood.
4. Install in the reverse order of removal.