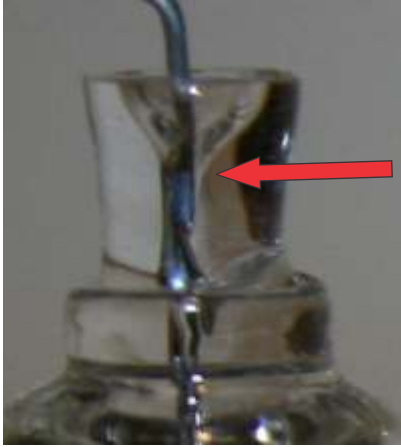


# How to Spot a Fake:

## Philips 85122+ D2S Bulb

Brought to you by The Retrofit Source Inc.



**Real:** Very good formation of the glass, small indentation in the center, return wire weld is encased in glass, bulb is sealed far from the glass body.



**Fake 1:** Much taller than the real Philips, return wire weld is not encased in the glass, bulb is sealed much closer to center of bulb body.



**Fake 2:** Sloppy formation of glass (slightly tilted and not straight), Return wire weld not enclosed in glass, bulb is sealed much closer to center of bulb body.



**Real:** Nicely formed oval shape capsule, good size that is symmetrical in shape, thicker glass encasing diodes, white or slightly gray colored salts.



**Fake 1:** Poorly formed capsule more square in shape, poorly formed glass that encases diodes very uneven, salts are red in color which is not correct for an 85122+.



**Fake 2:** Oval shaped capsule that is very small and not symmetrical in shape, thin glass encasing diodes, salts are white and slightly yellow.



**Real:** Larger perfectly symmetrical rivets, nicely tapered and formed lower glass tube, Zig-Zag Pattern of lower power wire within lower glass.



**Fake 1:** Smaller rivets, the glass is nicely formed but the tube is overly large, lower power wire is mostly straight.



**Fake 2:** Rivets are almost not noticeable, poorly formed lower glass tube, has Zig-Zag lower power wire.



**Real:** Typing is made up of individual dots, matte white in color, spacing between words, letters and lines is all uniform.



**Fake 1:** Typing still using individual dots but dots blend together, much too bright white, spacing is not uniform between letters and much too narrow between lines.



**Fake 2:** Typing still using dots but blend together badly, much too dull white, spacing is not uniform and letters are not formed correctly



**Real:** Small solder at the top is perfectly centered and nicely formed, protrusion on the center metal post fill most of the surface and nicely formed



**Fake 1:** Small solder at the top is not centered and poorly formed, protrusion on the center metal post is poor formed and much too small.



**Fake 2:** Small solder at the top is almost non-existent, protrusion on the center metal post is poorly formed and very small.